

ATRIE IP-DSLAM4800 Series – 200 Port

ATRIE IPDSLAM 4800 family is a shelf-type IP DSLAM, evolved from ATRIE IPAM-4800, equipped with management Switching Cards, power module, and high-port density ADSL2+ line cards. It is an ideal solution of immediate implementation of full-ranged DSL services to Internet service providers. Its fully hot-swappable design ensures the continuous operation of existing services, when plugging and removing of xDSL cards are required.

ATRIE IPDSLAM 4800 comes with unique bandwidth management, flow prioritization and data flow security control key features. With better QoS (quality of service) capability to meet triple play (voice, data, video) requirements, The system can be used in any type of network, offering very fast Internet, Ethernet, IPTV, VoIP or any other conceivable service to the end user.

ATRIE IPDSLAM 4800 provides various management methods: local console port, Telnet, and SNMP v1/v2-based EMS (A-View) allow administrators to monitor and configure the network at any time, anywhere.

Features

- 18-slot chassis-based system: Two slots reserved for Management Switching Cards and the remaining 16 slots for DSL line cards, creating max. 384 subscriber lines.
- Each ADSL2+/G.SHDSL.bis line cards has 24 ports Line Standard Support : Full rate ADSL 1, ADSL 2 as per ITU-T G.992.3, ADSL 2+ as per ITU-T G.992.5, ITU-T G.992.1, G.lite (G.992.2), ANSI T1.413-1998 POTS Splitter : Integrated POTS Splitter with surge protection as per ITU-T K-20 compliant

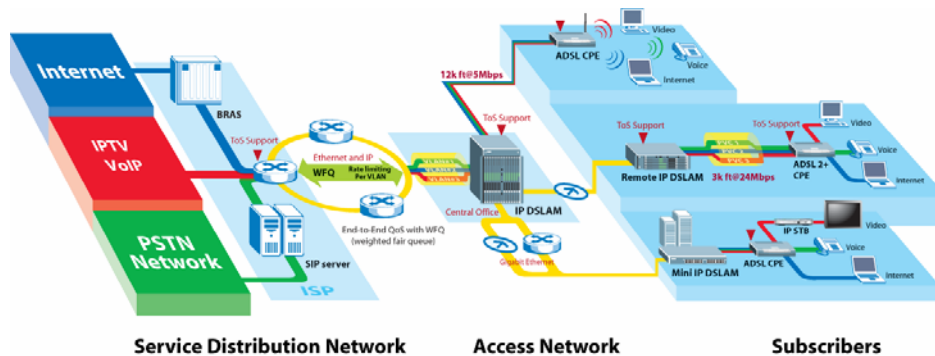
Advanced Triple Play Functionality

- Complete ATM QoS (UBR/VBR/CBR) and IP QoS (Packet classification/Rate Limiting/Queue Scheduling) on the xDSL line cards.

Sophisticated Element Management System (EMS)

- Support Alarm and Status Surveillance, Configuration management, Performance management, and Fault management.
- Multiple administrative accounts and three levels user privileges provided

Application



Specification

ATRIE IPDSLAM 4800			
System Overview		Security Function	
Rack Mountable	19" 8U	IEEE 802.1x	Yes
Total Slot No.	18	Multiple PVC per port	8
Max. DSL Port No.	24	Q in Q (VLAN stacking)	Yes
Max. DSL line card pluggable	8 (built-in splitter)	DHCP server relay option 82	Yes
	16 (external splitter)	MAC/IP ACL	Yes
Power Input	DC / AC	Packet Filtering rule	User define
Power input source	2 Cards AC/DC	Bridging	
Hot Swappable	Yes	Ethernet Bridging – Broadcast, Flooding / Dropping.	Yes
Line Rate	Up to 24 Mbps (Downstream), Up to 1 Mbps (upstream)	VLAN bridging	512 VLAN support
POTS Splitter	Integrated Internal/ External , Integrated SurgeProtection as per ITU-T K.20		Static VLAN
Interfaces		VLAN Stacking	Yes
Uplink	2 Gb 1000 base Fx-Sx, 1000 Base Fx Lx SFP Based, 2 1000 base Tx	VLAN Trunking	Yes
Subtending	Yes	Multicast function	
ADSL2/2+ line card	Yes	IGMP v1, v2	Snooping
G.SHDSL.bis line card	Yes		Proxy
QoS function		GVRP	Yes
	Yes	Inter-Working	
802.1q tag-based VLAN	Yes	IPOA to IPOE Tunneling	Yes
Input Rate Limiting (IRL)	Yes	PPPoA to PPPoE inter-working	Yes
		Support	RFC2684 , RFC 1483
Output Rate Limiting (ORL)	Yes	Network Management	
IEEE802.1p based Class of Service (COS)	Yes	SNMP v1, v2	Yes
Spanning Tree Protocol		CLI management	Yes
Spanning Tree Protocol	IEEE802.1d	EMS management	A-View
Environment Related Certifications	FCC , CE		

Certifications IEC 60950 and FCC 15-Class A complied UI 6095 Complied



Atrie Technology Inc.

Head Quarters: 10th Floor,14,Lane 609,Sec5 Chung Hsin Rd,San Chung City Taipei Hsien,Taiwan

Corporate office: Atrie House ,292/A,34th Cross,9th main ,4th Block ,Jayanagar -560 011 India

Tel :- +91-80-41101891/2/3, Fax :- +91-80-26349899

Web: <http://www.atrindia.com>

Email: contacts@atrindia.com

