



WireSpan5000

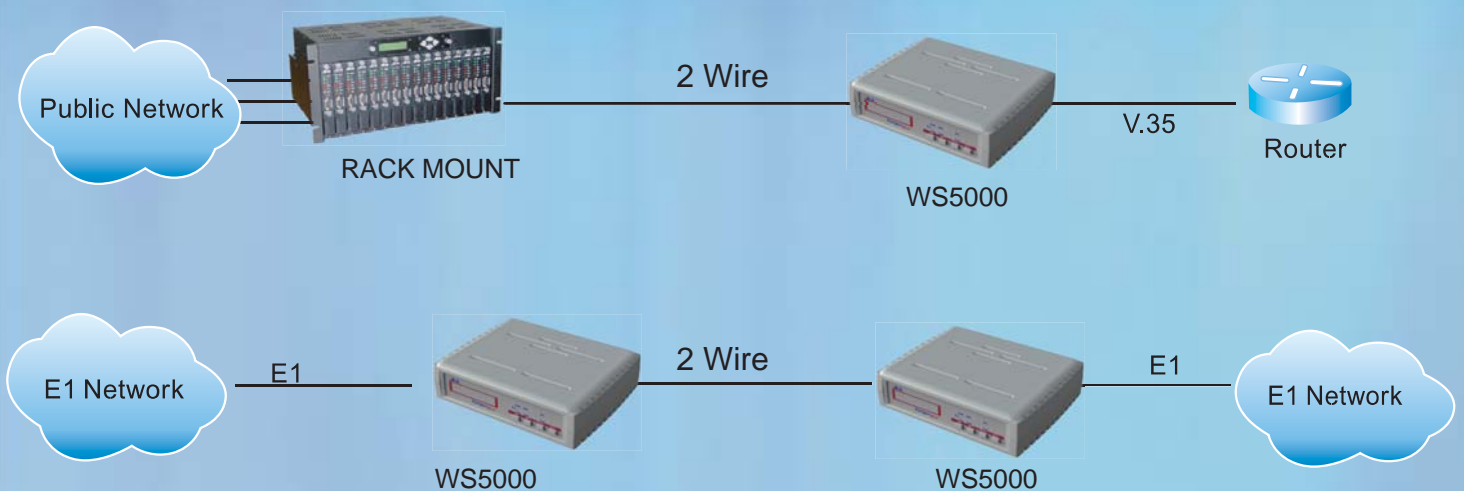
G.SHDSL Access Unit



Features

- Comply With ITU-T G.991.2 (G.SHDSL)
- Support 2 wires DSL connection (TEC Approved, CE, EMI certified)
- Support auto data rates adaptation between 64K and 2304K (N=1 ~ 36)
- Device operates in CO mode or CPE mode configurable
- Versatile user interface: V.35 interface, E1/Fractional E1 interface
- Built-in test pattern generator and detector
- Control via LCD management port

Application



WireSpan5000

G.SHDSL Access Unit

Specifications

DSL Interface:

- 1.Line Rate : 200Kbps ~ 2312Kbps (2 Wires).
- 2.Line Code : 16-TCPAM (G.SHDSL) comply with ITU-T Rec. G.991.2 Annex A and Annex B.
- 3.Line Type : Unconditional twisted pairs (2 Wires)
- 4.Line Impedance : 135 Ohms \pm 5%
- 5.Range : 10KM down to 6.5KM (2.3Mbps) at 24 AWG
- 6.Connector : RJ11
- 7.Suitable protection : ITU-T K.20, K.21

DTE Interface(E1 or V.35):

Two kind of model : E1 or V.35

1. E1 Interface

- Line Rate : 2.048Mbps \pm 50ppm.
- Line Code : HDB3/AMI
- Line Impedance : 120 Ohm \pm 5%for Twisted pairs
- Frame Format : Unstructured and structured framing (with CRC-4)
- Applicable Standards : ITU-T Rec. G.703, G.704, G.706, G.823
- Connector : 4 pin Terminal Block
- Fractional : N x 64Kbps (N=1~32) .
- Range : 1000 Feet

2. V.35 Interface:

- Data Rate(Nx64KBPS) : N=1~36(2W)
- Connector : M34 ISO 2593/ 34 pins female

Clock Option:

Clock Source : Internal, E1, Loop., V.35XTC

Management and Maintenance:

- Configuration : 16 x 2 LCD with 4 keypads
- Diagnostic : LLB, DLB, RLB, ; RLB with 2047 pattern V.54 Loopback (V.35 interface only)
- LED Indicator : E1 :PWR, TST , DSL, E1,ALM ; V.35:PWR, TST, DSL, TXD, RXD,ALM
- Remote management : Remote control via EOC managed support

Physical Dimensions:

Dimensions: 190mm (W) X 49mm (H) X 156mm (D)

Environment:

- Temperature: 0 ~ 45 degree Celsius.
- Humidity: 0% ~ 95% Non-condensing.

Power Requirement:

- AC 100-240 V~0.5A, 47~63Hz ; DC-36V~-72V (Built-in power circuit)
- G.703 : AC+DC ; V.35 : AC only
- Power consumption : 6 Watt (Max.)



ATRIE TECHNOLOGY INC.

10F, 14, Lane 609, Sec. 5, Chung Hsin Rd.,
San Chung City, Taipei Hsien, Taiwan, 241, R.O.C.
Tel: +886-2-2999-5155 Fax: +886-2-2999-4960
E-mail: contacts@mail.atr.ie.com.tw
[http:// www.atr.ie.com.tw](http://www.atr.ie.com.tw)



Product specifications are subject to change without notice.
Please contact your dealer for option availability.
All brand names are registered trademarks of their respective owners.