



WIRESPAN5400

G.SHDSL. bis Router

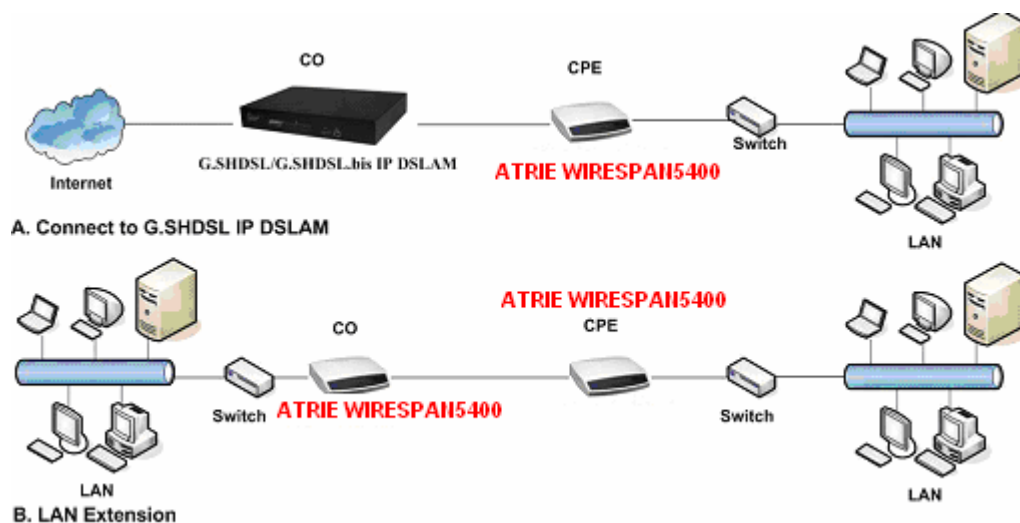
WIRESPAN5400 G.SHDSL.bis router takes advantage of the latest G.SHDSL.bis technology- *Extended Rate Bonded SHDSL*- unfolding unprecedented possibilities for *symmetric* transmission.

WIRESPAN5400's multi-pair bonding, higher bit and packet transport allow carrying symmetric data rates up to 5.69 Mbps, 11.38Mbps, or 22.76Mbps over 2-wire, 4-wire, or 8-wire POTS line respectively at the same reach range.

The application of WIRESPAN5400 is an ideal product for businesses and Internet Service Providers (ISP) to provide LAN extension and internet access; and its flexibility makes it ideal for applications such as web hosting, video conferencing and heavy two-way data traffic needed, particularly in the business environment.

With an user-friendly management mechanism present, WIRESPAN5400 can easily be configured via interfaces, such as TELNET, Web GUI, etc.

Application:



Features and Benefits:

▶ **Rate and Reach Improvements**

The rate is up to 5.69 Mbps, 11.38Mbps, or 22.76Mbps over 2-wire, 4-wire, or 8-wire POTS line respectively. The reach is as far as 12,000 ft.

▶ **CO and CPE Mode selectable**

Provide a point-to-point connectivity between two distant sites

▶ **2-wire / 4-wire/ 8-wire M-Pair Mode selectable**

Offer a flexible rate and reach options

▶ **Easy Management**

Support both web-based GUI and CLI-based management functions.

▶ **Backward Compatible to G.SHDSL (G.991.2)**

Specifications:

Standard Compliance

☞ **Comply to ITU-T G.991.2 (2003)**

☞ **Comply to ITU-T G.991.2**

- ▶ Transmission rate up to 5.69 Mbps on a 2-wire line
- ▶ Transmission rate up to 11.38 Mbps on a 4-wire line
- ▶ Transmission rate up to 22.76 Mbps on a 8-wire line
- ▶ Support of Annex A, Annex B, Annex E, and Annex F
- ▶ Support of M-pair mode where M=1 to 4 pairs
- ▶ Automatic load balancing for bonded pairs
- ▶ Support of point-to-point configuration which enables two CPEs to communicate end to end

Protocol Support

- ☞ Support of ATM over G.SHDSL.bis and G.SHDSL
- ☞ MAC bridging(IEEE 802.3 and 802.1D)
- ☞ PPPoE (RFC 2416)
- ☞ RFC 1483/2684 Bridged encapsulation (Capable of support routing as well)
- ☞ IP support including TCP, RIPv1, RIPv2, UDP, ICMP, ARP, RTP
- ☞ IEEE802.1P Priority Output Queuing
- ☞ IEEE 802.1Q VLAN
- ☞ IEEE802.3u Fast Ethernet 100BaseT
- ☞ MAC Filtering
- ☞ QoS support: VBR-rt, VBR-nrt, CBR and UBR
- ☞ Minimum support of 8 PVCs
- ☞ NAT/PAT support

- DHCP client/server and DHCP relay functionality
- VPN passthrough for IPsec and L2TP
- Support of IGMP Snooping
- DMZ Support
- IPsec VPN Support
- Support of Port-based VLAN

Diagnostic/Maintenance

- Firmware upgrade using FTP or TFTP (optional)
- Telnet Support
- Ability to respond to ATM OAM F5 End to End and Segment loopbacks
- Statistics on DSL link and data ports
- Syslog
- HTTP web download

Management Specifications

- Password protection
- PAP and CHAP support
- Remote access management via telnet
- SNMPv1
- Firewall Security
 - ▶ Packet Filter
 - ▶ Denial of Service
 - ▶ Stateful Packet Inspection (SPI)
 - ▶ Attack Alert and log
 - ▶ Access Control
 - ▶ Real time log
- MIB-II (RFC 1213, 1573)
- Web based GUI interface
- Command Line Interface (CLI)

LED Indicators

- LED indicators for power, DSL links, Alarm, Ethernet ports, and CO/CPE Mode

Hardware Interface

- WAN DSL interface: RJ-11 * 1 for 2 or 4 wires, while RJ-11 * 2 for 2, 4, or 8 wires
- LAN Ethernet interface: RJ-45 * 4; feature 10/100BaseT with auto-sensing and switching
- AC power adapter (90VAC – 265VAC, 47-63Hz)
- One craft Interface for local console access (CID)

Physical Specifications

- Dimensions: 35mm(H)×210mm(W)×193mm(D)
- Weight: 914g

Operating Environment

- Operating temperature: 32F to 113F (0C to +50C)

Warranty

- One year limited



Head Quarters: 10th Floor,14,Lane 609,Sec5 Chung Hsin Rd,San Chung City TaipeiHsien,Taiwan

Corporate office: Atrie House ,292/A,34th Cross,9th main ,4th Block ,Jayanagar -560 011 India

Tel :- +91-80-41101891/2/3, **Fax :-** +91-80-2634989

Web: <http://www.atrieindia.com>

Email: contacts@atrieindia.com