
MP 2690 Series Modular Security Router

MP2690series modular security router is a new router product, which aims at multiple application environments such as a small-centre access of industrial users and large-scale enterprises/ institutions, Internet access of branches and offices. MP2690 series router, designed according to drawer-type module structure, has many advantages such as high performance, security and reliability. Compared with MP2600 and MP1700, MP2690 provides various module configurations for different application environments of users, adapting to branches of small-to-medium-sized enterprises. It can serve as an access router between LANs and multi-service applications.

- ❖ High performance
- ❖ High port density
- ❖ Security and Reliability
- ❖ High Integration
- ❖ Dial-on-demand and no-data hang-up
- ❖ Multiple processing mechanisms of network crises
- ❖ Fine compatibility
- ❖ Initiated connection with multiplexer for access terminals
- ❖ Support for QoS
- ❖ VoIP secondary dial
- ❖ Support for DLSw protocol
- ❖ Route transmission all-in-one
- ❖ Management of hierarchical and distributed Network



Production Configurations

Product model	10/100M Ethernet	Configuration port	Multifunction module slot	SNA socket
MP2691	1	1	4	1
MP2692	2	1	4	1

Product features

High Performance

MP2690 series router adopts the special communication CPU, providing 100i«110kpps throughput and higher communication performance.

High-Density Ports

MP2690 series router adopts advanced technologies, can provide extra-high port-density on a module. The whole router can provides up to 16 2M asynchronous serial-port, 16 channelized / non-channelized E1 ports, which is sufficient for various network environments.

Security and Reliability

MP2690 series router support IPsec and multiple protocols (such as L2TP, GRE and so on). Besides that, MP2690 can also support hardware encryption module with state authentication, can provide network security service with guarantee of network performance.

High Integration

MP2690 series router supports built-in MODEM and frequency-band MODEM, realizes route transmission all in one, which make your network more simple and secure. Additionally, MP2690 can also support multiple kinds of built-in IP voice modules, is optimal for "Three-Network-in-One".

Dial-on-demand and No-data Hang-up

MP2690 series router can provide a perfect low-cost dial solution for users and realize the function of no-data hang-up through advanced built-in MODEM technology. Combined with DDR, the router can reduce the cost of communication greatly. Besides that, MP2690 can also support the standard DDR dial mode of external MODEM to meet the network demands of users. MP2690 can realize the sharing of physical interface of multiple dial users through Dialer Pool and the function of implementing different callings.

Multiple Processing Mechanisms of Network Crises

MP2690 series router provides backup in multiple forms. Its built-in MODEM serves as a dial backup at ordinary times, can switch to the remote configuration mode through buttons so that users and manufacturers can maintain it anywhere and the requirement of high-reliability network can be met. The standard power supply module with CE authentication can guarantee the protection of surge, over-voltage, low-voltage and over-current with stable and reliable output, and can also support the protection of instantaneous power cut to guarantee the normal operation of equipment.

Fine Compatibility

MP2690 series router has fine compatibility, can be full compatible with standard protocols of numerous famous routers, with fine expansion and adaptability.

Initiated Connection with Multiplexer for Access Terminals

Adopting the FixTerminal Access technology initiated by Atrie and the innovative function of built-in multiplexer, MP2690 can access terminals by means of combination with MP8100 or solely through IP network. It can be applied to branch sites with multiplexers and terminal access points with low cost.

Support for QoS

In the future, IP network will be required to be able to provide QoS. Aimed at different demands of users, MP2690 can provide network service function of promised bandwidth with different service quality, support queuing strategies (such as PQ, FIFO and WFQ etc.) and supply a satisfactory multifunction service platform with high performance/price ratio for small-to-medium-sized enterprises.

VoIP Secondary Dial

MP2690 can provide various modules of IP telephones with function of "secondary dial", namely, firstly dialing in the IP gateway of MP2690 through PSTN, and then dialing each IP telephone terminal in the IP network freely. The function can avoid fixed-dialing in the designated telephone terminals through PSTN, with practical use value. MP2690 can support standard H.323 protocol suit and GK interface; and it can realize interconnection and intercommunication with voice products of other manufacturers such as Cisco, AudioCodec and Motorola etc.

Support for DLSw Protocol

Atrie is the first company, which realizes SNA, DLSw and LLC2 protocols, and MP2690 can be full compatible with DLSw PLUS protocol of Cisco and has been used extensively in the financial system. Atrie router is connected with Cisco through DLSw and LLC2, can connect ATMs and front-end-processors. Presently, it has been used extensively, stably and reliably in the user network. MP1760 can realize the bridge and tunnel transmission of data cell of SNA protocol in the IP network, and support PU connection of QLLC, LLC2 and SDLC.

Route Transmission All-in-One

All-in-one can bring many advantages. For instance, when main lines such as DDN and FR, are broken down, Atrie router can switch to backup lines automatically to transfer data without external MODEM. Built-in transmission modules include frequency-band 336/56K MODEM, 128K MODEM, ISDN and so on. The whole network point, which is only composed of a router and terminal equipments, is very concise. This can reduce equipment investment and fault rate greatly.

Management of Hierarchical and Distributed Network

MP2690 series router supports three kinds of centralized network management modes (SHELL, WEB and SNMP) and can realize the network configuration, network monitoring, statistic, accounting and maintenance of ATRIE devices easily.

External Structure

It adopts standard 19" shield-electromagnetic-radiation chassis, which can be placed on the standard rack. Due to the characteristics of antiknock, anti high/low temperature, anti-electromagnetic radiation and easy installation/disassembly, MP2690 can run more stably and reliably.

Product Specifications

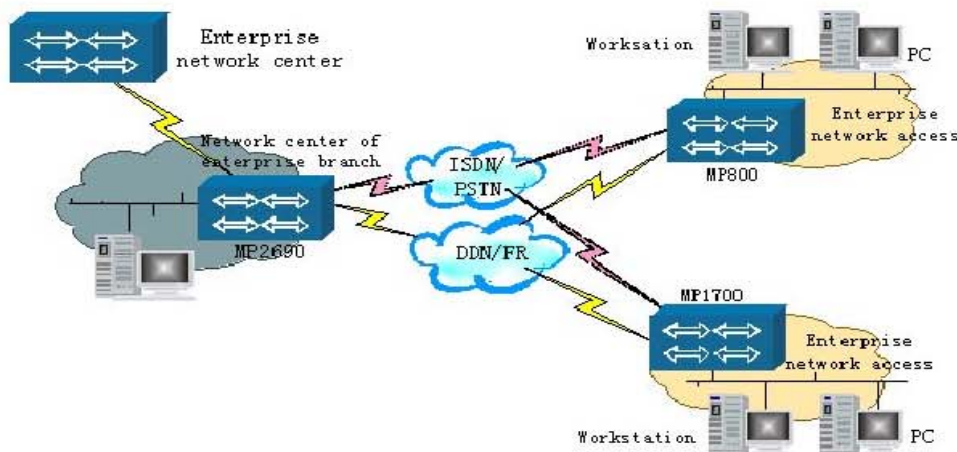
Item	Description
Processor	MPC 8245 266 MHZ
Flash	8~64Mbyte
SDRAM	64~256Mbyte
Input voltage AC	90 ~265V 50 / 60Hz
Power	48 W
Dimension	44mm x 444mmx390mm
Environment Temperature	0~40
Environment humidity	0~90 non-condensing
Link Protocol	PPP, SLIP,SDLC, FR, LLC2, ISDN, X.25, HDLC, Ethernet_II, Ethernet_SNAP,802.1Q
Network Protocol	TCP/IP, ICMP, UDP, FTP, TFTP, SNMP, TELNET, RLOGIN, DHCP, BOOTP, HTTP, DNS, ARP, RARP, DLSw
Routing Protocol	Static routing, RIPv1, RIPv2, OSPF, BGP, DDR, IRMP, SNSP

Order Information

Product model	Description
MP2691	MP2691 router£-1 10/100M Ethernet port standard
MP2692	MP2692 router£-2 10/100M Ethernet ports standard
RM2A-1FE	Single-port fast Ethernet module
RM2A-2FE	Dual-port fast Ethernet module
RM2A-1SA	Single-port high-speed synchronous/asynchronous serial-port module
RM2A-2SA	Dual-port high-speed synchronous/asynchronous serial-port module
RM2A-4SA	4-port high-speed synchronous/asynchronous serial-port module
RM2A-1CE1	Single-port channelized E1 module
RM2A-2CE1	Dual-port channelized E1 module
RM2A-4CE1	4-port channelized E1 module
RM2A-1E1	Single-port non-channelized E1 module
RM2A-2E1	Dual-port non-channelized E1 module
RM2A-4E1	4-port non-channelized E1 module
RM2A-1M128	Single-port MODEM module
RM2A-4M128	4-port MODEM module
RM2A-1U	Single-port ISDN U module
RM2A-4U	4-port ISDN U module
RM2A-1M336	Single-port frequency-band MODEM module
RM2A-4M336	4-port frequency-band MODEM module
RM2A-4VOP	4-port IP telephone module
RM2A-4A	4-port asynchronous serial-port module
RM2A-8A	8-port asynchronous serial-port module
RM2A-16A	16-port asynchronous serial-port module
RM2A-8VOP	8-port IP telephone module
RM2A-4VOS	4-port IP telephone switch module
RM2A-8VOS	8-port IP telephone switch module
RM2A-8VOEM	8-port IP telephone E&M trunk module
RM2A-EN	Special hardware encryption module

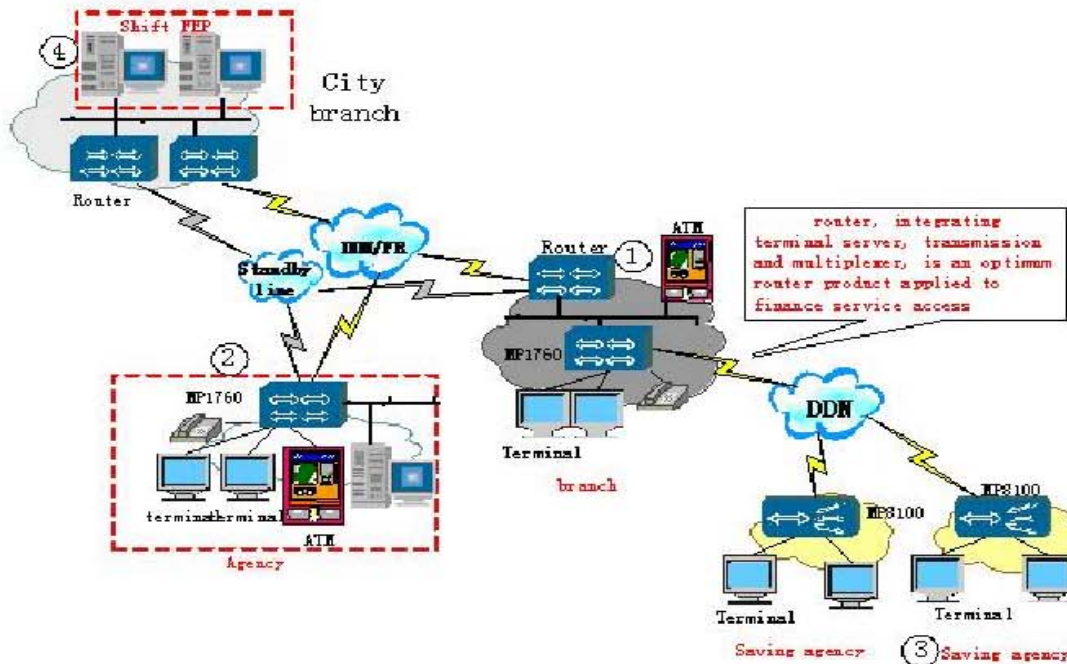
Typical Application 1: Aggregation Access of Enterprise Branches

MP2690 router has high port-density, can serve as the aggregation device of branches of large-scaled enterprises, connecting core routers and routers of network access point. Its powerful ability of expansion and personalized design make cost lower, operation simpler for network construction.



Typical Application 2 - New-type Terminal Access in Finance System

Based on profound understanding of finance network, Atrie adopts the FixTerminal Access technology and innovates the integration of multiplexer and router. This makes it possible to connect multiplexer and router. This kind of technology, which can presently be provided by only Atrie, not only upgrades value of existing devices rapidly but also increases the flexibility of Atrie router greatly. And for customers, the technology makes network construction more easy, invest lower and flexibility higher.

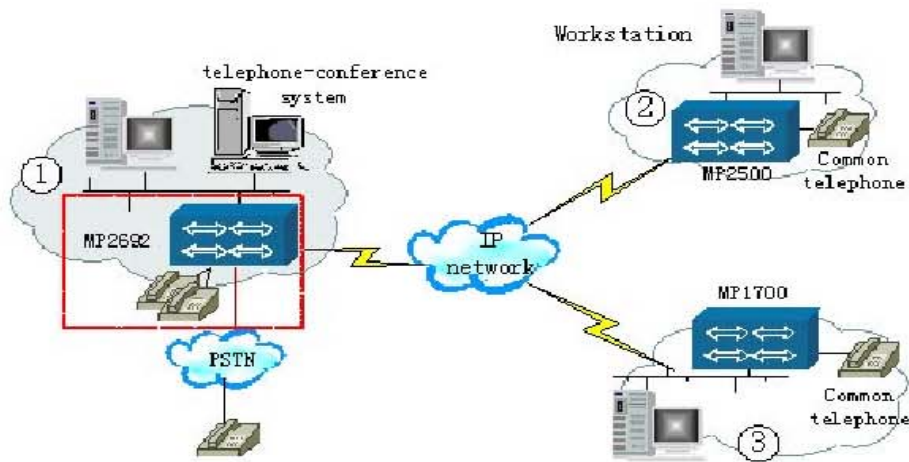


Description of solution

- 1) Branch centre adopts MP2690/2600/2500 series routers to direct connects with terminals or to connect with remote-end MP8100 multiplexer, connecting ATM and terminal devices. In this way, the canter need no multiplexer and GTS any more, and only a router port is occupied.
- 2) Direct connection with agencies through MP2500 router needs the support of service access points with IP technology.
- 3) No service access point with IP technology is needed and original connection is kept. Front end processors can be placed on city branch.

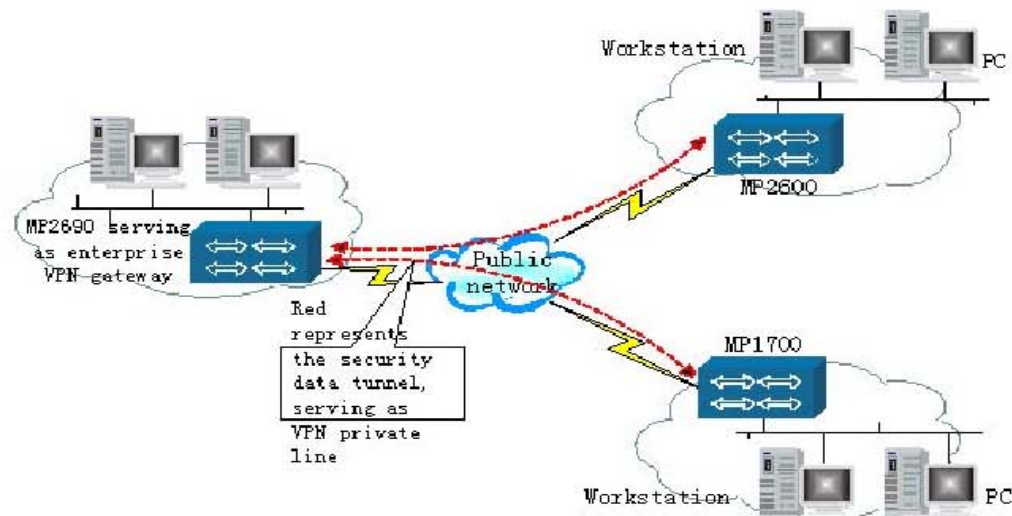
Typical Application 3 - Enterprise VoIP Application

MP2690 router, serving as a gateway device between PSTN and IP network, can implement conversion between voice signal and IP message and realize voice trunk via the existing IP network so that much call fee can be saved



Typical Application 4: Construction of security VPN

MP2690 router usually serves as enterprise VPN gateway. As network access router, MP2600/1700 can support tunnel transmission modes such as L2TP and PPTP. Hardware IPsec with state authentication, firewall and QoS can support security VPN and provide information transmission with high quality and high reliability for enterprises. Besides that, much communication expenses can be saved.



ATRIE TECHNOLOGY INC.
 10F,14, Lane 609 Sec. 5 Chung Hsin Rd.,
 San Chung City, Taipei Hsien, Taiwan, 241, R.O.C.
 Tel: 886-2-2999-5155 Fax: 886-2-2999-4960
 E-mail: contacts@mail.atrion.com.tw
[http:// www.atrion.com.tw](http://www.atrion.com.tw)



- Product specifications are subject to change without notice.
- Please contact your dealer for option availability.
- All brand names are registered trademarks of their respective owners.