



WireSpan 3000C

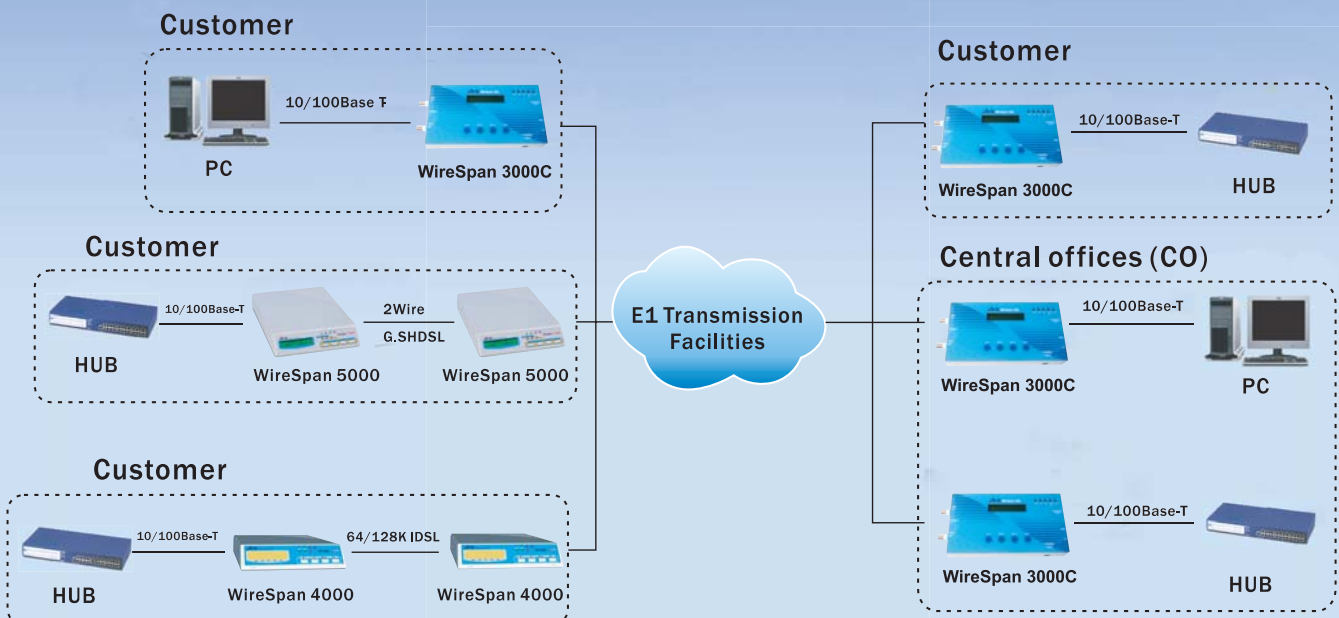
Fractional E1/Ethernet Access Unit



Features

- * Interface conversion between E1 G.703 and Ethernet.
- * Built-in NVRAM to store user setting.
- * LED indicators include PWR, SYN, BPV, LINK/ACT and 10/100.
- * Supports idle code insert or pass through function.
- * Provides universal switching power adapter to enhance reliability.
- * Compact size easy to setup anywhere.
- * Selectable data rates of n x 64Kbps, up to 2048 Kbps.
- * Framing format: PCM31, PCM30 .
- * Unframed E1 access unit with 2048 Kbps data rate.
- * Controls and setting via 16 x 2 LCD and 4 keypads.
- * Firmware upgradeable through console port.
- * Connect 10BASE-T and 100BASE-TLANs and VLANs over E1.

Application



WireSpan 3000C

Fractional E1/Ethernet Access Unit

Specifications

Item	Model	WireSpan 3000C
Interface		E1 G.703
Type		Full-duplex fixed at 2048Kbps \pm 32 ppm
Line		Two unconditional twisted pairs (4 wires)
Range		Up to 1000 ft. / 26AWG
Impedance		120 ohms (balanced) for twisted pair 75 ohms (unbalanced) for coaxial cable
Complies with		ITU-T G.703, G.704, G.706, G.732 and G.823
Frame format		PCM30 /PCM31 / Un-frame
CRC check		CRC-4 / Non CRC
Line code		HDB3 / AMI
Connector		BNC or RJ-48C
Ethernet Interface		
Type		Auto-sensing 10 / 100BASE-T Ethernet
Data rate		10 Mbps / 100 Mbps
Connector		RJ-45 (PC / HUB)
Bridging		Dynamically learning and aging up to 1,024 MAC addresses
Management		
Clock mode		Internal, E1 (\pm 50 ppm)
Indicator		PWR, SYS, BPV, LINK / ACT, 10 / 100
Configuration		16 x 2 characters LCD panel via 4 keypads or console port
Diagnostic		Digital Loopback
Power Requirement		
Input / Output Voltage		100 ~ 240 VAC @ 50 ~ 60 Hz / 5 VDC, 2A
Environment		
Operating temperature		0°C ~ 50°C
Humidity		0 to 90% Non-condensing
Physical Dimensions		19 cm (L) x 10cm (W) x 2.8 cm (H)



ATRIE TECHNOLOGY INC.

10F, 14, Lane 609 Sec. 5 Chung Hsin Rd.,
San Chung City, Taipei Hsien, Taiwan, 241, R.O.C.

Tel: 886-2-2999-5155 Fax: 886-2-2999-4960

E-mail: contacts@mail.atrie.com.tw

[http:// www.atrie.com.tw](http://www.atrie.com.tw)



- Product specifications are subject to change without notice.
- Please contact your dealer for option availability.
- All brand names are registered trademarks of their respective owners.

95050001