

# Atrie

# OptoSpan-120

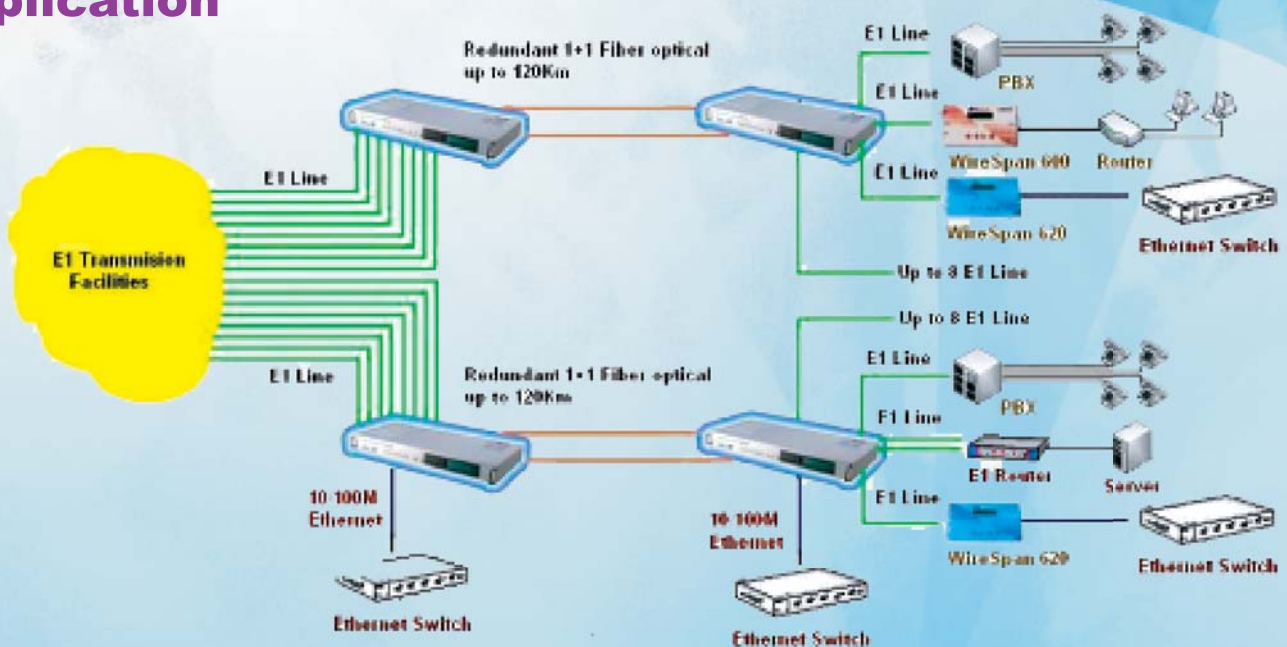
## Fiber Optical Multiplexer



### Features

- \* Single unit (1U), 19" rack mountable design
- \* 4 or 8 E1 plus 100M Fast Ethernet combined onto a single fiber strand (V.35 X 2 option)
- \* Completely transparent transmission
- \* Redundant 1+1 Fiber optical protection
- \* Transmission distance up to 120km (option)
- \* E1 Interface options: BNC/75 Ohms or RJ-48C / 120 Ohms
- \* Alarm and status indicators on front panel
- \* Local and Remote loopback function
- \* Order wire (hot-line telephone) to assist with remote maintenance
- \* Redundant AC and/or DC Power
- \* Every interfaces can use at the same time
- \* Ethernet throughput 100 Mbps

### Application



# Optospin-120

## Specifications

### Transmission Mode

4 E1 Links + 100M Fast Ethernet X 4 port (V.35 X 2 option)  
8 E1 Links + 100M Fast Ethernet X 4 port

### Optical Interface

Data Rate: 155Mbit/s  
Optical Wavelength: 1310nm or 1550nm  
Connector: SC/PC or FC/PC  
Fiber links: 1+1 Automatic or Manual

### User Interface

#### E1 Interface

Line Coding:HDB3  
Line Rate: 2.048 Mbps  
Line Impedance: 120 ohms for Twisted Pair or 75 ohms for Coaxial Cable  
Connector: RJ-48C or BNC  
Compliance: ITU-T G.703, G.704, G.706 and G.732  
Jitter Performance: Compliant with ITU-T G.823

#### V.35 Interface (option)

Data Rate: N x 64K bps      Connector :DB25 Female X 2

#### Ethernet Interface

10/100 Base-Tx Ethernet Interface  
Fully compliant with 802.3/802.3u auto negotiation function  
MDI/MDIX Auto Crossover

### Diagnostic Function

LL: Local Loopback      RL: Remote Loopback

### LED Indicator

POW (AC,DC)  
E1 : Channel LOS ( 1~ 8 ) TEST  
Optic : OPC(A,B) NOP LOF ALE3 ALE6 TEST  
Ethernet :Link/ACT 10/100M FDX/COL  
V.35: RD TD  
Phone

### Dimensions

438 mm (W) x 230 mm (D) x 44 mm (H)

### Operating Environment

Operation temperature: 0°C~50°C  
Storage temperature:-25°C~70°C  
Relative humidity: up to 95% (non-condensing)

### Power Requirement

AC: 90V~120V / 176 ~ 264V, 50~60Hz  
DC:-36V~-72V VDC  
Power Consumption:25W



### ATRIO TECHNOLOGY INC.

10F, 14, Lane 609, Sec. 5, Chung Hsin Rd.,  
San Chung City, Taipei Hsien, Taiwan, 241, R.O.C.  
Tel: +886-2-2999-5155 Fax: +886-2-2999-4960  
E-mail: [contacts@mail.atrion.com.tw](mailto:contacts@mail.atrion.com.tw)  
[http:// www.atrion.com.tw](http://www.atrion.com.tw)



200810-A

- Product specifications are subject to change without notice.
- Please contact your dealer for option availability.
- All brand names are registered trademarks of their respective owners.