



OptoSpan 100

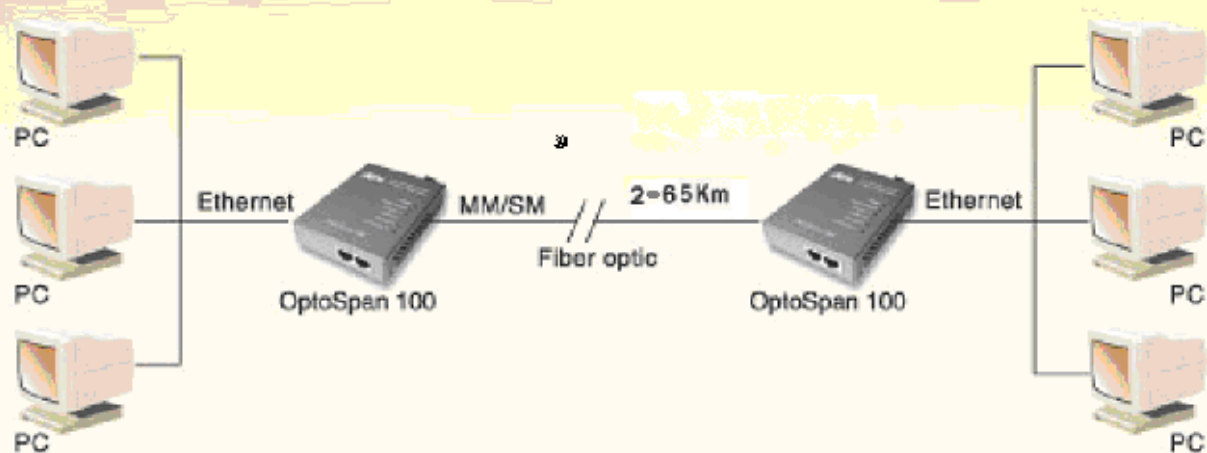
10/100M Ethernet Media Converter



Features

- Compliance with IEEE 802.3 10BaseT and 802.3u 100BaseTX, 100BaseFX standards.
- One 10/100BaseTX port supporting auto negotiation of 10/100M speed and full/half duplex mode.
- One 100BaseFX port supporting multi-mode or single-mode fiber optic.
- Supports flow control with IEEE 802.3x standard for full duplex, or back-pressure mode for half duplex.
- **in both stand alone and rack mount**
- Built-in storage of 1024 MAC address.
- Supports address aging and the aging time up to 300 seconds.
- Provides two RJ-45 to connect Ethernet Switch/HUB or PC.
- LED indicators for Power, Half/Full duplex mode, Link, Activity and Speed.

Application



10/100M Ethernet Media Converter

OptoSpan 100

Specifications

Item	Model	OptoSpan 100
Compatibility		IEEE 802.3 10BaseT IEEE 802.3u 100BaseTX, 100BaseFX
Number of Ports		One 10/100BaseTX One 100BaseFX
Network Media		Cat-5 twisted-pair, up to 100m. SC/ST connector, 62.5/125 μ m multi-mode fiber, up to 2Km SC connector, 9/125 μ m single-mode fiber, up to 65Km
Speed		10 /100Mbps (Half-duplex) 20 /200Mbps (Full-duplex)
		100Mbps (Half-duplex) 200Mbps (Full-duplex)
Switching Method		Store-and-Forward
Flow Control		IEEE802.3x (Full-duplex) Back-Pressure (Half-duplex)
LED Indicators		POWER HAL/FUL/COL-FX LINK/ACT-FX HAL/FUL/COL-TX LINK/ACT-TX 10/100M-TX
Power		External power adapter 5 VDC/1A, 6W max.
Dimensions		81mm(W) \times 110mm(D) \times 23mm(H)
Environment		0 $^{\circ}$ C - 50 $^{\circ}$ C 0% - 95% Non-condensing



ATRIE TECHNOLOGY INC.

10F, 14, Lane 609 Sec. 5 Chung Hsin Rd.,
San Chung City, Taipei Hsien, Taiwan, 241, R.O.C.
Tel: 886-2-2999-5155 Fax: 886-2-2999-4960
E-mail: contacts@mail.atrie.com.tw
<http://www.atrie.com.tw>



• Product specifications are subject to change without notice.
• Please contact your dealer for option availability.
• All brand names are registered trademarks of their respective owners.

92020001